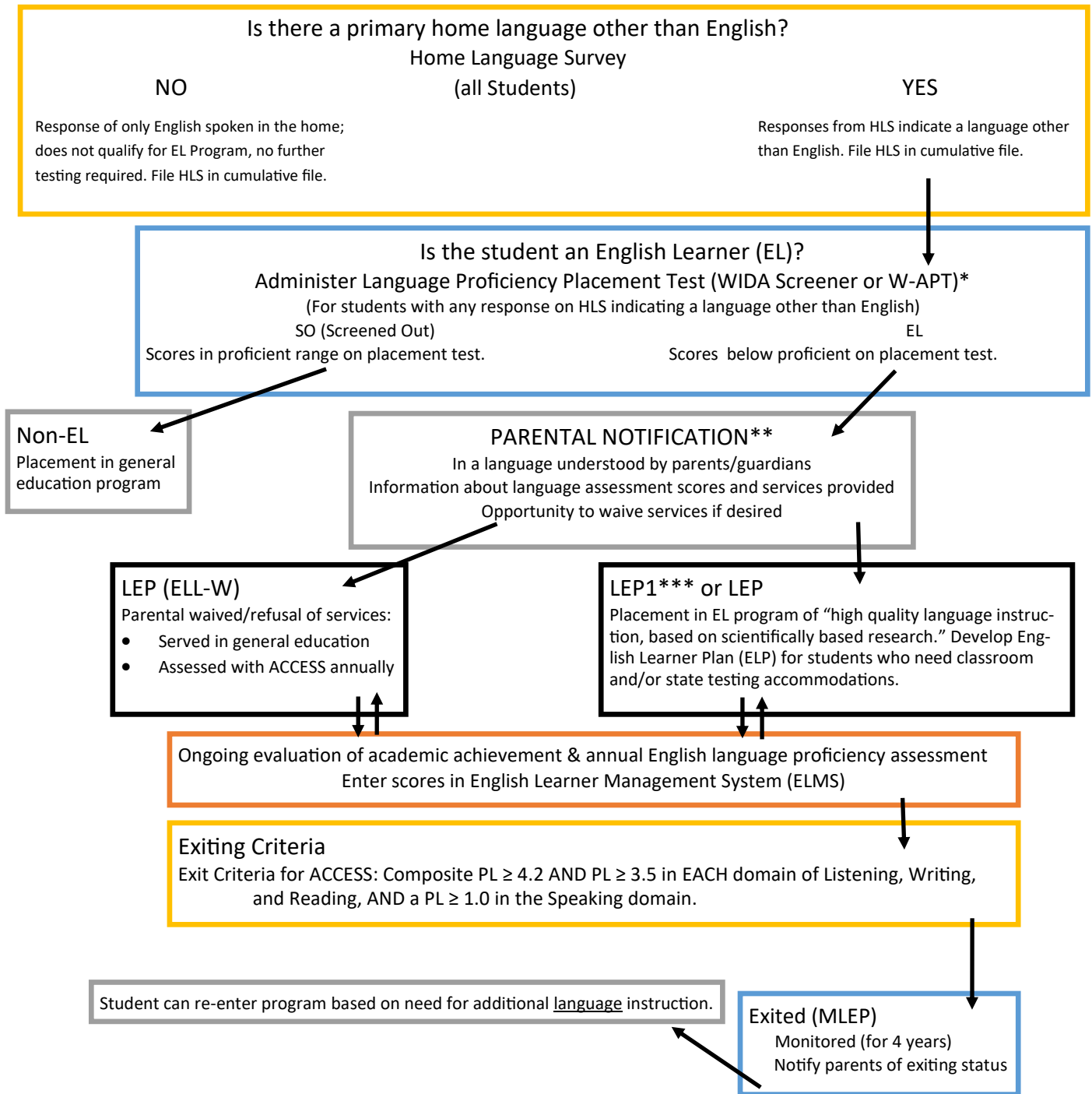


Student Identification, Assessment, Placement, Exiting, Monitoring and Reclassification for EL Program Flowchart



*Prior to testing check the student’s cumulative records and English Learner Management System (ELMS) for previous W-APT/WIDA Screener/ACCESS results or EL status from another school.

**Annual parent notification is also required for students who are continuing in the EL program.

***LEP1 is designated to students who qualify as EL **AND** are new to a U.S. school within the last 12 months.